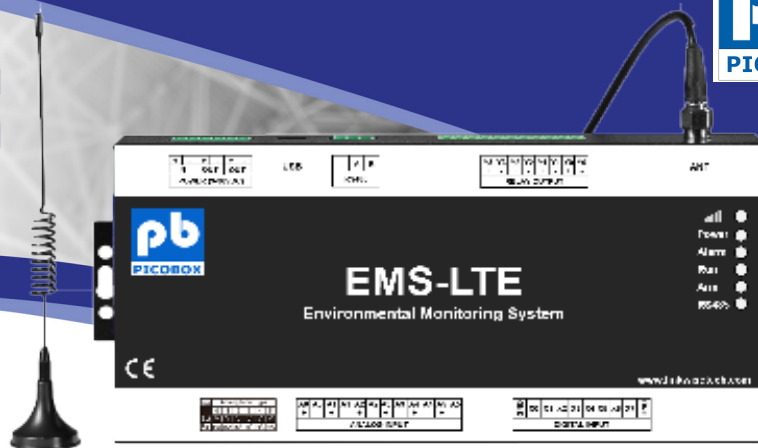


EMS-LTE

Simple System, Powerful
Feature, Easy to Deploy

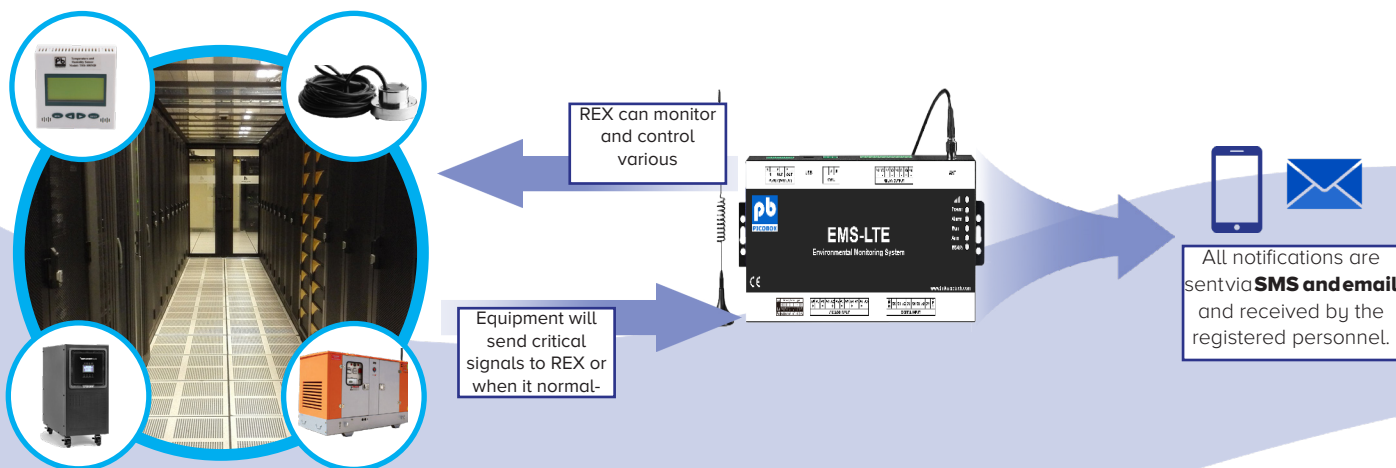


INTRODUCTION

Every equipment is vital in managing and maintaining our business operation to run smoothly and effectively. Therefore, well-maintained and frequently checked facilities and equipment are important to avoid unnecessary downtime. Downtime or unexpected equipment breakdown is an expensive affair that can lead to business losses once leave unnoticed. However, with a reliable monitoring system, losses can be minimized and preventive actions can be taken

EMS-LTE is a built-in all in one monitoring controller designed to meet all the aspects of facility monitoring. It can monitor some equipment or small facility and instantly notifies the personnel through **SMS in real-time and remotely**. EMS-LTE provides an efficient way of monitoring your equipment while at the same time increasing the productivity of your facility personnel.

EMS-LTE is easy to use yet it is packed with powerful features to meet a wide range of industrial and commercial applications. It can integrate with any third-party sensor and equipment via dry contact or 4-20mA interface.



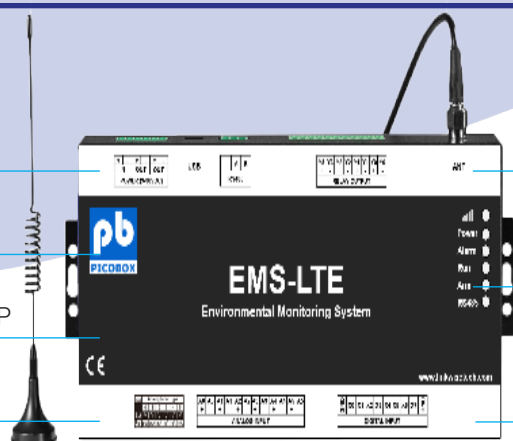
BENEFITS

EASY TO INSTALL

LOW MAINTENANCE

LOW COST OWNERSHIP

24 X 7 OPERATION



DEDICATED STANDALONE OPERATION

EASY CONFIGURATION
SOFTWARE TOOL

OPEN STANDARD PROTOCOL
EASY FOR EXTERNAL APPLICATION
INTERFACE

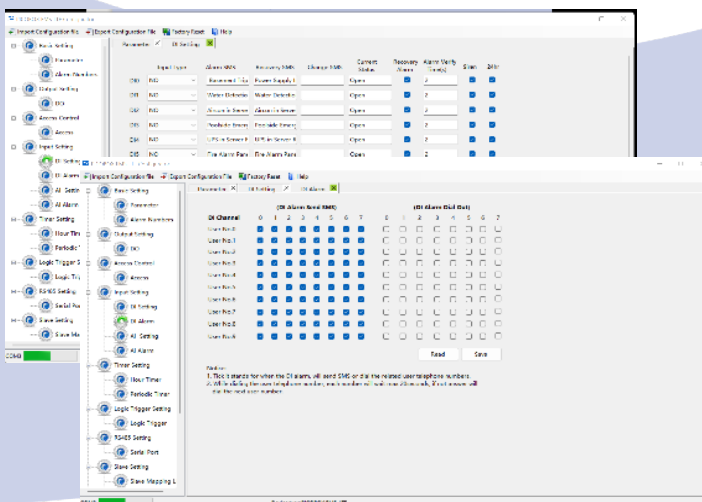
FEATURES

- ✓ Standalone- configuration via software tool
- ✓ With up to 5000 events logs, first IN and first OUT
- ✓ With on board backup battery and state of the art intelligent charging
- ✓ 8 digital inputs, 6 analog inputs & 4 relay outputs
- ✓ Able to monitor 64 monitoring points at the same time
*with expansion DAQ model
- ✓ Built-in supervisory circuit ensures high reliability and stable operation
- ✓ Send alarm and status from all sites via text message
- ✓ SMS alarm messages up to 10 mobile numbers
- ✓ Supports data pushing to data base
- ✓ Remote on/off control of equipment via logic programmer and SMS command .

Easily monitor your facilities through SMS Text.

Picobox EMS-LTE is designed to provide alert status in the most convenient way-through SMS text. In just 2-3 seconds you will be able to receive an alarm updates when something happened to your facility and therefore preventive action can be taken care of immediately. Facilities manager can now easily monitor the status of each device and equipment in real time and remotely.

A truly unique small device with full powerful features and functionality



Easy to configure via software tool

EMS-LTE configure via friendly user and powerful software tool. Configuration is straight forward (such as description of monitoring points, mobile numbers, etc.). No programming knowledge is require.

Top-class compact device with high I/O expandability

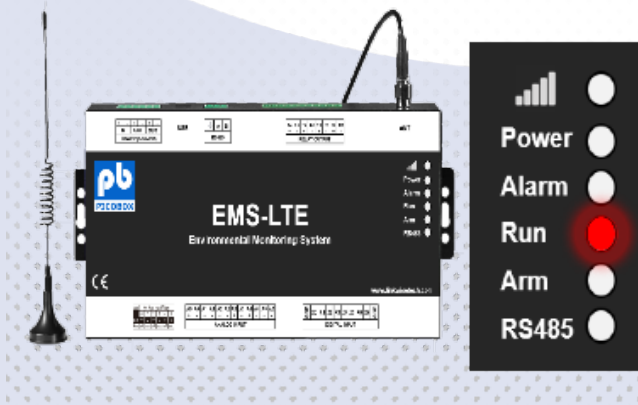
Can easily expand the monitoring capabilities of EMS-LTE up to 64 points by using expansion modules like DAQ.



LED Indicator

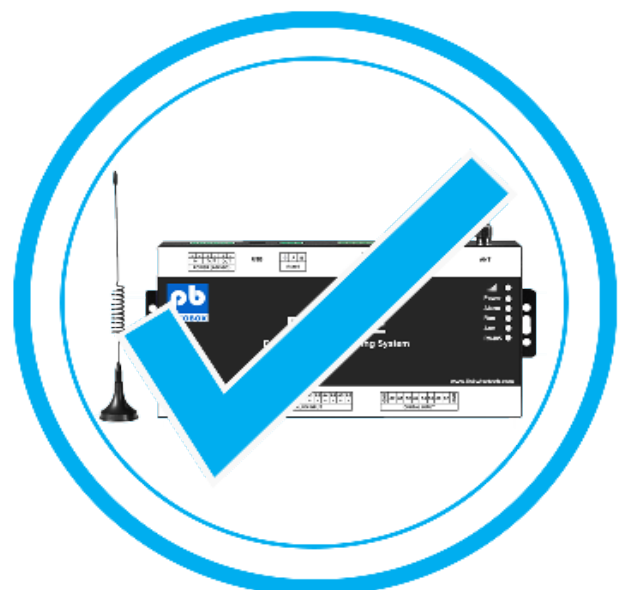
EMS-LTE has its own LED indicators that show various status of your device.

- Power status
- Telco Status
- Modbus Status
- Network Status
- Alarm Status



Low cost with full functionality

A compact all in one device that provides a simple yet reliable monitoring system with just a very low-cost ownership. Designed to easily install, use and maintain with 24 /7 system operation.



Why Monitor your facilities?

Have you ever experienced your facilities shut down without you noticing it?

If not, some questions might have crossed your mind. Do I need to monitor my equipment? Is it worth the investment? How can monitoring system help my business operation?

The answer is to estimate any losses when one of your equipment breakdowns. Can you afford downtime from your crucial equipment? What are the consequences if a problem left unnoticed?

EMS-LTE can easily address these concerns a proven monitoring system which is used in Data Center, Facilities and a wide variety of applications.

APPLICATIONS



Data Center



Manufacturing Process



Telecommunication



Fire and Security



Energy Efficient & Power Management

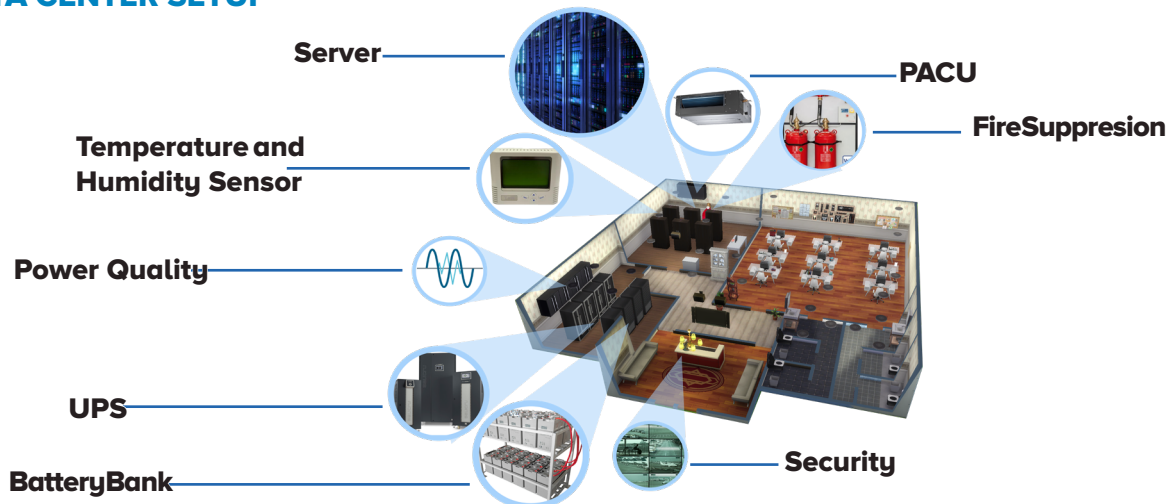


Environmental

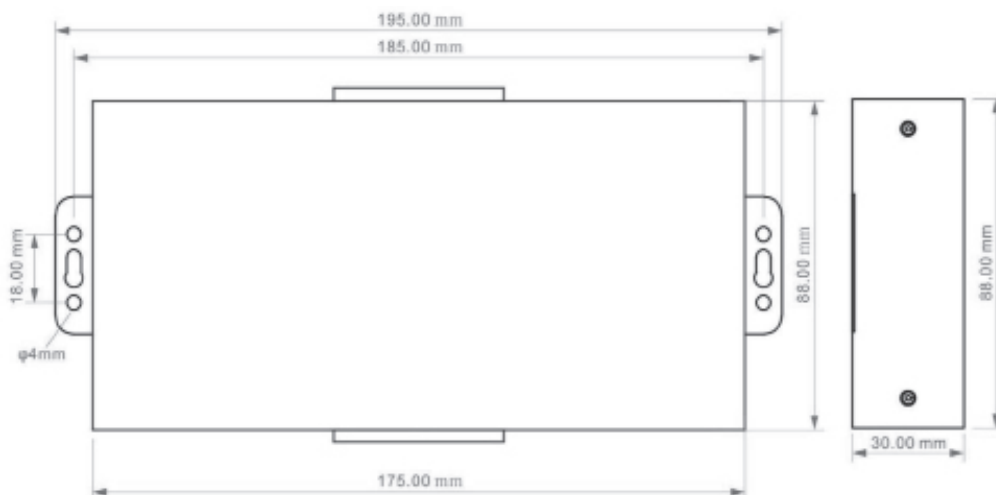


M&E Facility Management

DATA CENTER SETUP



PHYSICAL LAYOUT



TECHNICAL SPECIFICATION

DC Power Supply	Standard Adapter DC 12V/ Range 9-36 VDC
Power Consumption	Standby: 12V/70mA; Working Max 12V/300mA
GSM Frequency	B1/3/5/7/8/20@FDD-LTE, B38/40/B14@TDD-LTE, B1/5/8@WCDMA
Sim Interface	Supporting 3V Sim Card
External Antenna	SMA Antenna Interface, 50 Ohm, Gain: 3dB
RS485	1 RS485 port, supports Modbus RTU Master and Slave
Digital Inputs	8 Digital inputs, NC/NO type,
Analog Inputs	6 Analog inputs, 12 bit resolution, 0-5V or 0-20mA or 4-20mA
Relay Outputs	4, Rated: 5A/30VDC, 5A/250VAC
Memory Capacity	Internal 8G SD card inside, can save the data for 5000 historical data and events
Temperature Range	-10 - + 70 degree Celcius
Humidity Range	Relative Humidity 95% (condensation free)
Installation	DIN35mm industrial rail installation
Exterior Dimension	75mm*88*30mm
Net Weight	950g

OPTIONAL ACCESSORIES

ANTENNA EXTENDER



Model: 3db gain 900/1800 Mhz Antenna
Type : Magnetic base mounting
Mount: 32 cm.
Length: 3m RG179 coaxial cable
Cable: Boost up GSM signal in enclosed area. Use to maximize signal performance.
Features:

TEMPERATURE AND HUMIDITY SENSOR



Model: THS-100MD
Power: 12-4V DC
Range: -20-70 DegC, 0-100%RH
Accuracy: +/-0.3 DegC, +/- 3%RH
Dimensions: 86x86x34
Modbus Connection: 2 wired Modbus RTU
Connection Interface: RS485

SPOT SENSOR



Model: SP-12
Type : Spot water detection probe
Power: 1 2VDC or 24VDC non polarity
Output: Normally close (NC) relay dry contact 12 or 24VDC, 1A (non polarity)
Sensing Height: 1mm to 6mm (adjustable)
Dimension: 24 (h) x 44 (diameter) mm

TEMPERATURE AND HUMIDITY SENSOR



Model: THS-104D
Power: 12-24V DC
Range: 0-50 DegC, 0-100% RH
Accuracy: +/- 0.5 DegC, +/- 5%
Output: RH 4-20mA
Dimension: 100x80x30mm